

KAWAI

ES920 · ES520
Portable digital pianos







At home, on stage, your music.

The Kawai ES920 and ES520 have been designed to deliver the finest playing experience possible within a portable piano. These stylish instruments are ideally suited to musicians seeking a piano that provides an authentic keyboard action and a selection of inspiring sounds, yet can still be moved easily, or placed on an attractive furniture stand without occupying too much space.

The latest ES models are also an excellent choice for gigging musicians, academic institutions, and places of worship, thanks to their lightweight body, powerful speaker systems, and great audio connectivity. And with a slew of customisable settings, Bluetooth® MIDI and audio, and engaging apps, the ES920 and ES520 are also extremely personal pianos, that players of all ages and abilities can take pride in owning.

Introducing the new ES series: At home, on stage, your music.

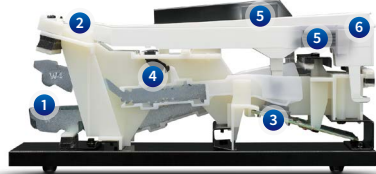


The touch of a grand piano

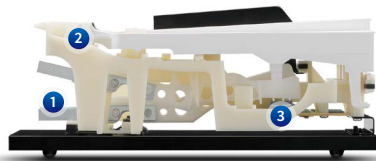
The keyboard action of an acoustic grand piano is composed of black and white keys, graded hammers, and numerous other components, all working in harmony when each note is pressed. It is a beautifully designed mechanism that allows gifted pianists to express a wealth of feeling and emotion in their playing.

Translating the piano action's intricate movements to a digital instrument, while retaining these acoustic-like nuances is a challenging task, which draws upon Kawai's 90+ years of knowledge and experience in building the world's finest pianos.

More realistic, responsive, and reliable



Responsive Hammer III action (ES920)



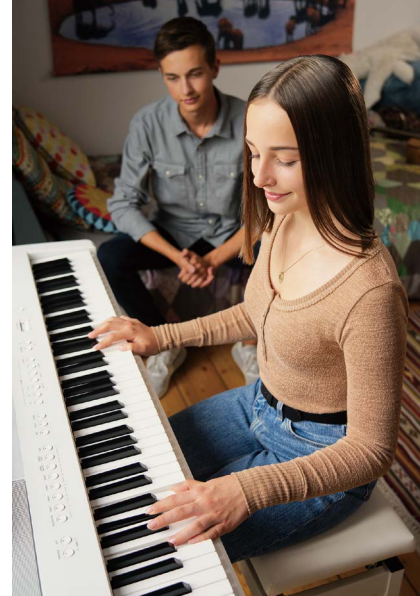
Responsive Hammer Compact II action (ES520)

- 1 Weighted hammers
- 2 Key pivot point
- 3 Triple sensor
- 4 Let-off mechanism
- 5 Counterweights
- 6 Ivory Touch key

Kawai's *Responsive Hammer III* and *Responsive Hammer Compact II* keyboard actions have been developed to recreate the supreme touch of a fine acoustic grand piano, with their realistic movement and springless designs providing a smooth and natural piano playing experience.

The ES920 and ES520 keyboard actions both feature Kawai's triple-sensor hammer detection system for enhanced responsiveness and accuracy, while structural reinforcements throughout the action assembly help to minimise noise and key wobble during powerful fortissimo passages.

Superior control



The weight of the keyboard is graded to mirror the heavier bass hammers and lighter treble hammers of an acoustic piano. This allows players to practise pieces with confidence, and transition to an acoustic piano easily.

In addition, the ES920's keyboard action also features counterweights embedded within each key. These help to balance the touch of the keyboard during pianissimo passages, while adding greater substance when playing with force.



The Premier piano of Japan

Earning a reputation as the 'Premier piano of Japan', Shigeru Kawai instruments grace the stages of concert halls and musical institutions throughout the world, and are highly prized for their outstanding tonal clarity and exceptional dynamic range.

The latest ES models capture the magnificent tone of the Shigeru Kawai SK-EX and Kawai EX concert grand pianos. In addition, the ES920 also features the sound of the medium-sized SK-5 studio grand piano, allowing musicians to enjoy the contrasting properties of each instrument.

True character in every note

The rich, expressive sound of the SK-EX and EX concert grand pianos is at the heart of the latest ES models, with all eighty-eight keys of these world-class instruments painstakingly recorded, meticulously analysed, and accurately reproduced as high-fidelity digital waveforms.



Recording each key individually in this way preserves the grand piano's unique harmonic character, and guarantees that the sound heard when playing any one of the ES920 or ES520's weighted keys is a faithful representation of the original acoustic source.



Variety beneath your fingertips

Complementing the various classical, jazz, and pop grand piano sounds, the ES920 and ES520 also feature a distinctive upright piano sound, as well as a strong selection of vintage EPs and drawbar organs, allowing this portable piano to serve as a convenient gigging board.



Superb sound quality

Developed in collaboration with Onkyo, one of Japan's leading premium audio equipment manufacturers, the ES920 and ES520 feature redesigned motherboard, amplifier, and audio delivery systems. These premium components combine to deliver best-in-class audio quality, producing an extremely rich, clear sound with minimal distortion.

The instruments' impressive 40W output system utilises speaker box enclosures that deliver a rich, expansive sound to rival much larger console digital pianos. This allows for a compact, portable instrument, capable of enthralling medium-sized audiences without the need for additional amplification.



Inspiring, convenient features

Complementing the instruments' authentic *Responsive Hammer* keyboard actions and superb grand piano sounds, the ES920 and ES520 also offer a strong selection of convenient digital piano features that further enhance the playing experience.

Wireless Bluetooth® connectivity, USB audio* record/playback, Dual and Split keyboard modes, and a rich assortment of instrumental voices are just some of the features accessible from the piano's intuitive control panel and large OLED display, while the convenient *Rhythm Section** provides 100 professional backing accompaniments spanning a wide range of musical genres.

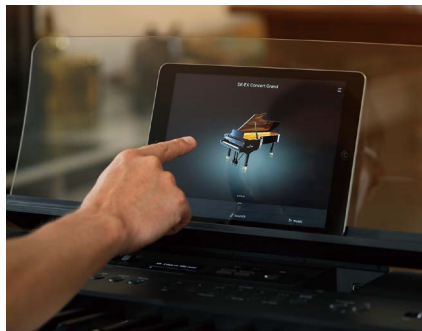
* ES920 only



Integrated Bluetooth® connectivity

In addition to standard USB and MIDI jacks, the ES920 and ES520 also feature integrated Bluetooth® MIDI and Audio technologies that allow these instruments to communicate with supported smart devices wirelessly.

Once paired with their phone or tablet, players can enjoy a wide variety of exciting music-related apps, or stream audio directly through the instruments' powerful speaker system without needing to connect extra cables.



Superb headphone sound

Kawai's *Spatial Headphone Sound* (SHS) feature, enhances the depth and realism of the pianos' sound when listening through different types of headphones, helping to reduce auditory fatigue when playing for extended periods of time.

Adjust & tweak

The ES920 and ES520 provide a slew of options for players who enjoy tweaking their sounds. *Virtual Technician* allows fine-grain control over acoustic piano characteristics, while the effects and amp sim are essential for EPs and organs.

Professional backing styles

In addition to standard Dual and Split playing modes, the ES920's *Rhythm Section* feature offers solo performers a selection of professionally arranged pop, jazz, funk, and Latin backing accompaniments at the touch of a button, complete with intelligent full-keyboard chord recognition.



Live performers will also appreciate the ES920's added 4-band EQ fader control on the upper panel, allowing players to easily tailor the instrument's sound for certain acoustic environments, or quickly boost frequencies in order to cut-through the mix when taking a solo.



Modern & stylish design

The ES920 and ES520 adopt a brand new case design, utilising a molded unibody construction. The smoothly rounded edges and clean lines complement the flat, uncluttered panel surface, with elegantly recessed buttons that depress with a satisfying click.

The ultra-portable ES models are the lightest instruments in their class, yet retain a stylish, professional quality that players can trust.

Accessories



F-10H pedal (included)



GFP-3 triple pedal



HM-5 designer stand



F-302 triple pedal bar (for HM-5)



SC-1 padded gigbag

Specifications



		ES920	ES520	
Keyboard	Action Type	Responsive Hammer III	Responsive Hammer Compact II	
	Key Surfaces	Ivory Touch	Matte	
	Other Features	Graded hammers, Triple sensor, Counterweights, Let-off simulation	Graded hammers, Triple sensor	
Sound	Sound Engine	Harmonic Imaging XL, 88-key piano sampling	Progressive Harmonic Imaging, 88-key piano sampling	
	Grand Piano Source	Shigeru Kawai SK-EX, Shigeru Kawai SK-5, Kawai EX	Shigeru Kawai SK-EX, Kawai EX	
	No. of Sounds	38 voices	34 voices	
	Polyphony	max. 256 notes	max. 192 notes	
	Virtual Technician	21 parameters	17 parameters	
	Reverb & Effects	Reverb: 6 types, Effects: 16 types, Amp Simulator: 3 types		
Audio System	Output Power	40 W (20 W x 2)		
	Speakers	(8 x 12) cm x 2		
Recorder	Internal Recorder	10 song, 2 track recorder – max. 90,000 notes	3 song, 1 track recorder – max. 10,000 notes	
	USB Recorder	Play MP3/WAV/SMF/KSO, Record/Overdub MP3/WAV, Save SMF, Load/Save KSO	Play SMF, Play/Save KSO	
	Metronome	10 time signatures, 100 (x2) Rhythm Section styles	7 time signatures, 100 drum rhythms	
Features	Demo Songs	25 sound demo songs, 5 Main + 2 Rhythm Section demo songs	23 sound demo songs	
	Keyboard Modes	Dual, Split, Four Hands (Volume/Balance adjustable)		
	Display	128 x 64 pixel OLED		
	Memories	28 Registration memories (7 x 4)		
	Spatial Headphone Sound	Normal, Forward, Wide, Off		
	Equaliser	Tone Control (8 presets + 4-band User EQ), 4-band EQ faders	Tone Control (8 presets + 4-band User EQ)	
	App Support	PianoRemote (iOS/Android), PiaBookPlayer (iOS/Android)		
	Connectivity	Headphones	1 x ¼", 1 x ⅛" STEREO	
		Audio	LINE IN (⅛" STEREO), LINE OUT (¼" L/MONO, R)	
		MIDI/USB	MIDI (IN/OUT), USB to Host, USB to Device	
Bluetooth®		Bluetooth MIDI, Bluetooth Audio		
Other		Damper (for F-10H), Damper/Soft/Sostenuto (for F-302 or GFP-3), Speaker on/off switch		
Design	Power	AC adapter (18 W consumption)		
	Available Finishes	Black, White		
	Dimensions (Not including music rest)	134 (W) x 37.5 (D) x 14.5 (H) cm 52 ¾" (W) x 14 ¾" (D) x 5 ¾" (H)		
	Weight	17.0 kg (37 ½ lbs.)	14.5 kg (32 lbs.)	

Specifications are subject to change without notice. | * Availability of Bluetooth function and finishes may vary depending on market region.

KAWAI

THE FUTURE OF THE PIANO



Bluetooth® word marks and logos are registered trademarks owned by Bluetooth SIG, Inc. and any use of such marks by Kawai is under license. Other trademarks and trade names are those of their respective owners.

Copyright © 2021 Kawai Musical Instruments Mfg. Co., Ltd. All Rights Reserved.
www.kawai-global.com/es-series



CA1144E-S2103 Version 1
Printed in Japan